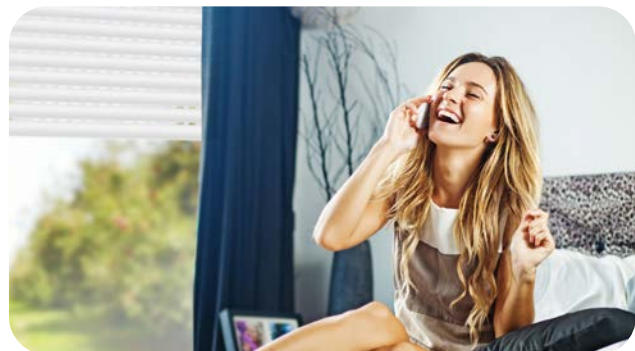


THE ASSETS OF DRUTEX ROLLER SHUTTERS:



UNCOMPROMISING SAFETY

The implementation of numerous solutions connected with the lifting blockade of the rollers and their steering, make the rollers a perfect barrier against burglars.



PERFECT THERMAL INSULATION

The implementation of the best components in the production process is also investment in energy-efficiency and decreased need for energy, which significantly influences the heating costs. The test that were carried out in ITB ensure that IGLO 5 window with the heat transfer coefficient $U_w = 0.99 \text{ W}/(\text{m}^2\text{K})$ with a closed roller resulted in the heat transfer coefficient on the level of $0.75 \text{ W}/(\text{m}^2\text{K})^*$.

COMFORT AND SIMPLICITY OF USAGE

The possibility of steering the rollers might be personalized due to the individual preferences of the customers. They might be steered manually or by using an electric motor.



PERFECT ACOUSTIC BARRIER

the rollers guarantee a decrease of noise and make it possible to enjoy silence and tranquility.



QUALITY AND AESTHETICS

Rollers are produced from the best components which impact their exceptional functionality and superior aesthetics. Thanks to the modern materials used in the production process as well as the perfection of decor on every production level, they guarantee elegance and ease of use for many years.



DRUTEX S.A.
ul. Lęborska 31
77-100 Bytów
phone: +48 59 822 91 01; 59 822 91 04
fax: +48 59 822 91 03
e-mail: drutex@drutex.com.pl
www.drutex.eu

Trade partner

*for the window size 1500 mm x 1500 mm according to CSI Institute in the Czech Republic

DRUTEX
THE BEST WINDOWS

www.drutex.eu

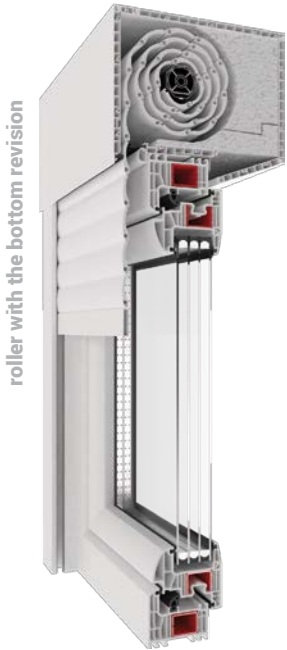
ROLLER SHUTTERS

THE TYPES OF DRUTEX SHUTTERS:

ON-LAID PVC ROLLER SHUTTERS SYSTEM

On-laid PVC roller shutters are a system of rollers integrated with the window, which can be assembled during the construction of a building or replacement of the windows. The wide range of colours of the shutter boxes, PVC guide bars and aluminium armours, as well as a variety of drives and safety devices of a roller, meet the expectation of all Customers.

Modern system of the external roller shutters offers high level of thermal and acoustic insulation. The possibility to order the rollers with a built-in mosquito net is an additional asset.



THE TYPES OF LAID-ON ROLLERS:

WITH THE BOTTOM REVISION

- available in size 170 mm or 210 mm (the box height)
- enables practically the full external and internal installation, thanks to which only the guide bar and aluminium armour are visible. This affects the aesthetics of the roller shutter after it has been fitted
- the access to the box for construction work is possible after opening the bottom bar

WITH THE FRONT REVISION

- available in size 170 mm or 210 mm (the box height)
- the construction makes it possible that the shutter is visible only from the outside of the building
- the conservation works may be carried out after opening the bar at the front of the box placed inside the building



ADAPTATION ALUMINIUM ROLLERS SYSTEM

The system of external aluminium rollers has been designed for already existing buildings or ones under construction. The roller shutter is made of aluminium and is available in various shades of RAL palette and wood-like colours. The armour, made of aluminium profiles, filled with polyurethane foam, is rolled inside the box fitted on the wall or the window frame. The box is then a decorative element and it fits the architecture of the building. There is the possibility to build in a mosquito net integrated with the roller shutter.

THE TYPES OF ADAPTATION ROLLERS:

45° ROLLER

- available sizes: 137, 165 and 180 mm (the box height)
- has a special cut-off of the box which removes the right angle
- available in the chosen RAL palette colours

OVAL ROLLER

- available sizes: 142x147; 170x175; 185x190 mm (the box height)
- the oval shape fits the delicate elements of the construction perfectly
- the aluminium armour matches the colours of the box according to the chosen shades of RAL colour palette

UNDER-PLASTER ROLLER

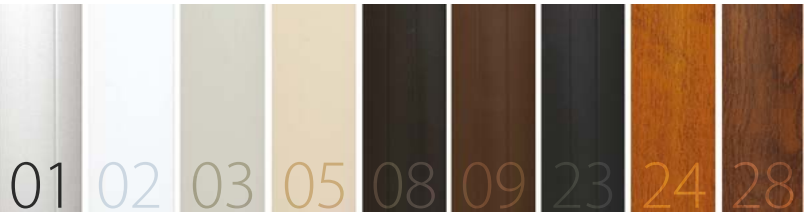
- available sizes: 127, 165 or 180 mm
- might be assembled in different ways, thanks to the opening bar at the bottom of the box
- there is a possibility to place it from the front of the box
- colours in chosen RAL colour palette

BEAUTY AND AESTHETICS OF THE ROLLER ARMOUR

The aluminium armour is filled with thermal insulation foam and is available in the following colours: anthracite, brown, nut, dark brown, golden oak, silver, grey, white and beige. Additionally, there is the possibility of applying louvres and finishing bars in the same colours, which significantly influences the aesthetics and the appearance of the whole roller shutter. Upon the customer's request, it is also possible to use different RAL colours. The high quality and rigidity of the armour guarantee exceptional energy-efficiency, strength and wind resistance.

Available armour colours:

- | | | |
|-----------|---------------|---------------|
| 01 silver | 05 beige | 23 anthracite |
| 02 white | 08 dark brown | 24 golden oak |
| 03 grey | 09 brown | 28 nut |



INTELLIGENT STEERING SYSTEMS

There are several ways of easy opening and closing the rollers:

- **manual** – by using a belt pull, crank handle or a belt with a crank mechanism
- **automatic** – steering with a remote, switch or a key
 - **with wires**
 - individual steering
 - the system enables development into steering with a remote
 - **wireless**
 - RTS radio steering system

Definitely, the most convenient solution is RTS radio steering.

By this type of steering, it is possible to steer the rollers centrally or each one separately. Also, various groups can be created. For instance, when one prefers to steer the rollers on the eastern and western side of the building separately. It is also possible to steer from different points and change them according to one's preference. Moreover, one may also program the time for opening and closing the shutters, even when not at home. It enhances our security. The intelligent solutions of steering the rollers also include atmospheric sensors in the equipment, which allows for uncompromised comfort in case of weather change. The equipment of the roller shutter with electric drive significantly improves its advantages, mainly the ease of use and energy-efficiency.



Did you know...?

External roller shutters are a perfect solution for the whole year. It is a great idea both for summer and winter.

During the summer, the external roller shutters secure against overheating of the rooms, and during the winter, against heat loss.

Additionally, they are great security against burglary.

Thanks to their functionality, the external roller shutters are an integral part of modern construction technologies.